



**OPUS Sp. z o. o.**  
ul. Toruńska 8, 44-122 Gliwice

+48 32 420 11 11  
kontakt@opus.pl  
opus.pl

Professional guillotine

## **Electric-hydraulic guillotine - IDEAL THE 68**

Catalogue number: 906879



### **Description**

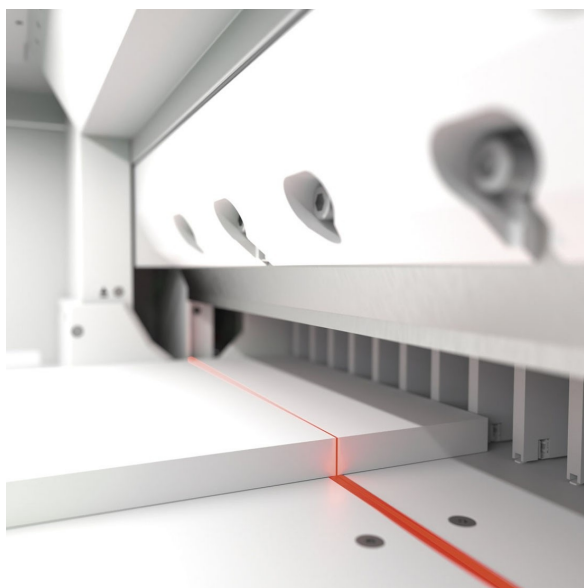
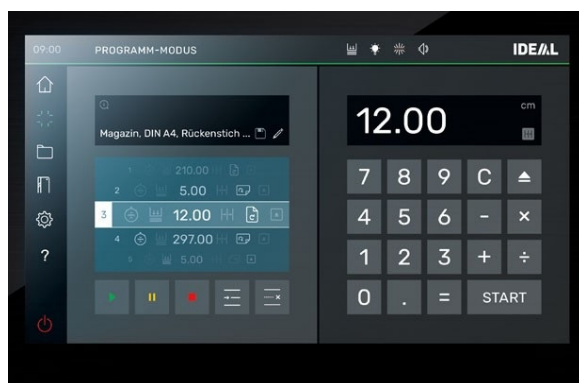


**IDEAL THE 68 - a new generation electric guillotine with hydraulic clamp drive.**

Designed for optimal, maximum efficiency and always safe work. It is an ideal solution for printing houses, small printing plants, advertising agencies, offices, digital printing houses, copy shops and wherever fast and precise cutting is needed. IDEAL has been operating since 1951, it is synonymous with reliability and the highest quality.

**Operation and control via a high-quality 15.6" touch screen.**

The intuitive software of the IDEAL THE 68 guillotine with comprehensive functions now at your fingertips. The easy-to-use, comfortable for your eyes display has a smooth tilt adjustment, perfectly adapts to lighting conditions and the ergonomic needs of the user.

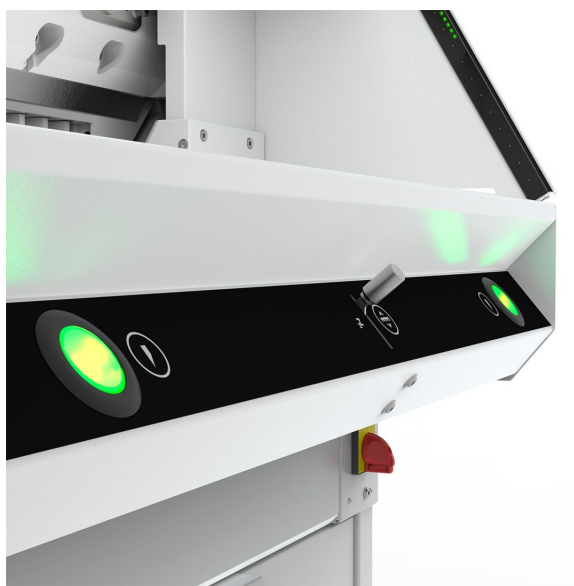


**The precision and quality of your paper guillotine matters!**

Clean edges with every cut, precision-bearing blade guide, electronically monitored false clamp plate, manual fine adjustment of the backgauge and optical cutting line display – all this guarantees a successful cut every time.

**Safety is, above all, work comfort for the cutter.**

The IDEAL THE 68 guillotine is equipped with the SCS (Safety Cutting System). This is a system that ensures complete safety during cutting, and includes: two-handed blade activation, infrared light beam safety curtain, safe blade replacement, blade depth adjustment and restricted access via password protection.





**Maximum adaptation to the needs of the paper guillotine operator.**

Adjustable table height, integrated function for exchanging cutting sticks, operator guidance via colour signals – many ergonomic functions needed in everyday work.

#### **THE new, even better series.**

- 40% faster clamping and cutting
- 50% higher maximum clamping pressure
- 100% faster backgauge
- PIN code restricted access



#### **Parameters**

Guillotine purpose	for professional use
Brand	IDEAL
Cutting length	680 mm
Maximum cutting thickness	80 mm
Narrow cut	15 / 60 mm
Table depth	680 mm
Cutting knife work type	electromechanical
Clamp drive	hydraulic
Cutting knife power	2300 W
Clamp drive power	not applicable
Backgauge power	100 W
Net weight	330 kg
Gross weight	356 kg
Height	1523 mm
Width	1099 mm
Depth	1331 mm
Device warranty	2 years
Delivery and installation at the customer's premises	Ask a salesperson
Other device parameters	electrically operated backgauge control infinitely

Other device parameters

Electrically operated backgauge control, infinitely dimmable, switchable optical cutting line with luminous LEDs, control panel with programmer and multi-touch display, automatic hydraulic clamp drive, precisely adjustable pressure force via the control panel, IR light beam safety curtain

## Gallery



Find a product on:

<https://en.opus.pl/electric-hydraulic-guillotine-ideal-the-68>