



**OPUS Sp. z o. o.**  
ul. Toruńska 8, 44-122 Gliwice

+48 32 420 11 11  
kontakt@opus.pl  
opus.pl

Professional electric hot print stamping machine

## **Electric hot print stamping machine - OPUS unipress**

Catalogue number: 415489

Professional electric hot print stamping machine.



### Description



## **UNIPRESS – PERFECT HOT PRINT STAMPING AND EMBOSSING ON BAGS, HANDBAGS, SHOES AND GARNERY**

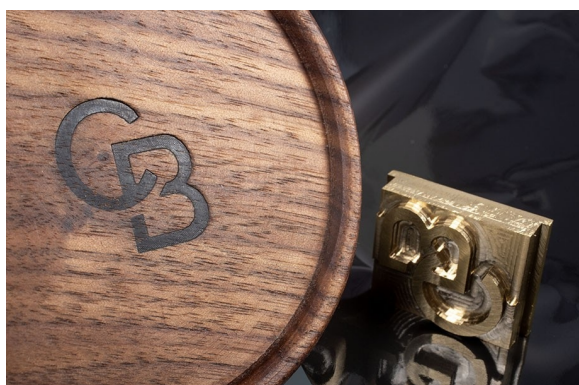
**Unipress** is a universal machine designed for professional hot print stamping and embossing on materials of a specific shape.

## CREATIVE HOT PRINT STAMPING - SUITABLE EVEN FOR SPECIFIC MATERIALS

The construction of the hot print stamping machine is based on proven and reliable **eccentric mechanism**. All operating parameters of the equipment can be programmed using a microprocessor controller with a digital display - thanks to it you can easily set **heater temperature** (20 – 150°C) and **pressing time** (0.5 – 10 seconds), you will also see **the number of stampings done so far**. It is also possible to change the scale in which the temperature is displayed - **Celsius** and **Fahrenheit** are available.



Using **colorful films, fonts and personalized matrices** you can apply any logo, text or symbol to various types of surfaces. The hot print stamping machine was designed to hot print stamping and embossing on various materials, e.g. on **leather accessories**, which makes it perfect for **renovation points**, manufacturers of handbags, belts, wallets, cases, company gadgets, and also in **craft workshops** of the handmade type.



## SAFE AND EASY OPERATION

**Unipress** is a equipment intended for **manual operation**, which, thanks to the construction and technological solutions used, is extremely **simple and safe** for anyone!

## HOT PRINT STAMPING EASIER THAN YOU THINK

The hot print stamping and embossing is done by pulling the machine lever and does not require the use of a lot of operator force.



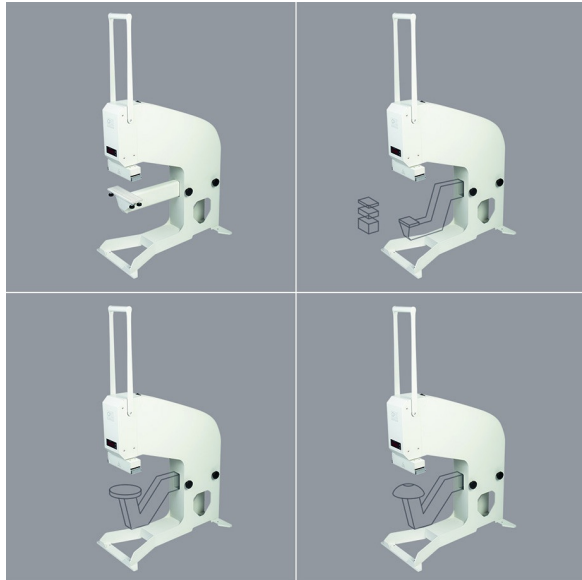
## EASY PREPARATION OF FONTS AND MATRICES

To facilitate the operator's work, Unipress has been equipped with special **hooks** on which a frame can be placed for font and matrices arrangement. Depending on your needs, you can use frames with different number and row sizes.

## PRECISE HOT PRINT STAMPING AND EMBOSSEING ON DIFFERENT SURFACES

**Adjustable working table** with millimeter scale will allow you to perform hot print stamping and embossing with maximum precision on objects of various types and shapes. The equipment is **stable** - it can be fixed to the tabletop with screws or the included locksmith's clamp. **Rubber feet** prevent from scratching the surface and leave no traces on it.





### INTERCHANGEABLE WORKING ARM – ADJUST UNIPRESS TO YOUR NEEDS

The standard Unipress arm, on which the item to be hot print stamp is placed, is **not a permanent element**. It can be easily unscrewed and replaced with a custom-made arm for a specific product type. This allows the user to use **dedicated working elements**, for example, for bags, belts, shoes, wallets, cases, or clothing items. The interchangeable arm allows the support to be perfectly adjusted to the shape of the item, which **increases embossing precision, work comfort, and repeatability of hot print stamping**.

### WIDE RANGE OF ACCESSORIES FOR HOT PRINT STAMPING AND EMBOSSING

OPUS's offer in hot print stamping and embossing field is **an abundance of possibilities**. In the assortment you will find **fonts** available in different formats, typefaces and languages, **frames** for any text arrangement and **foils in various colours**.

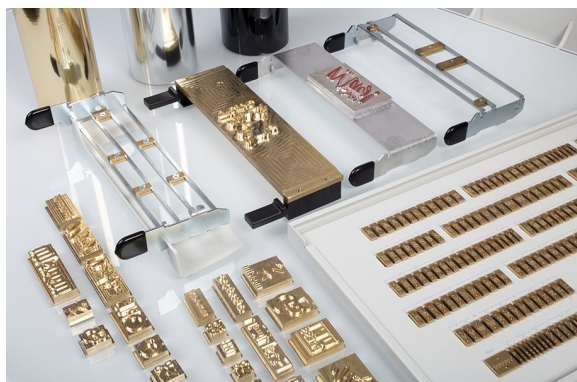


### UNIQUE CUSTOMIZATION FOR PROFESSIONALS

**Especially for you** we will make **individual matrix** with your company's logo, any inscription or graphics. We also manufacture individual beams with a worktable designed according to the customer's needs.

## CREATE YOUR OWN COLLECTION OF ACCESSORIES FOR HOT PRINT STAMPING AND EMBOSsing

Choose useful accessories according to your needs that will make your work easier and expand your possibilities. The standard equipment of the Unipress hot stamping machine includes: **magnetic stops** for the proper setting of the material, **a container for storing the foil** and a **cutter**, thanks to which cutting foil in rolls into pieces becomes quick and convenient, **screwdriver**, **Allen keys**, **tweezers** and **locksmith's clamp** for secure fixing of the device.



## KEY FEATURES OF UNIPRESS

- hot print stamping and embossing on various surfaces and materials: haberdashery, company gadgets, etc.
- permanent imprint
- adjustable heater temperature (20 – 150°C)
- adjustable pressing time (0.5 – 10 seconds)
- a wide selection of fonts, foils and frames
- possibility to order a personalized matrix
- stable construction
- adjustable worktable
- safe and easy to use

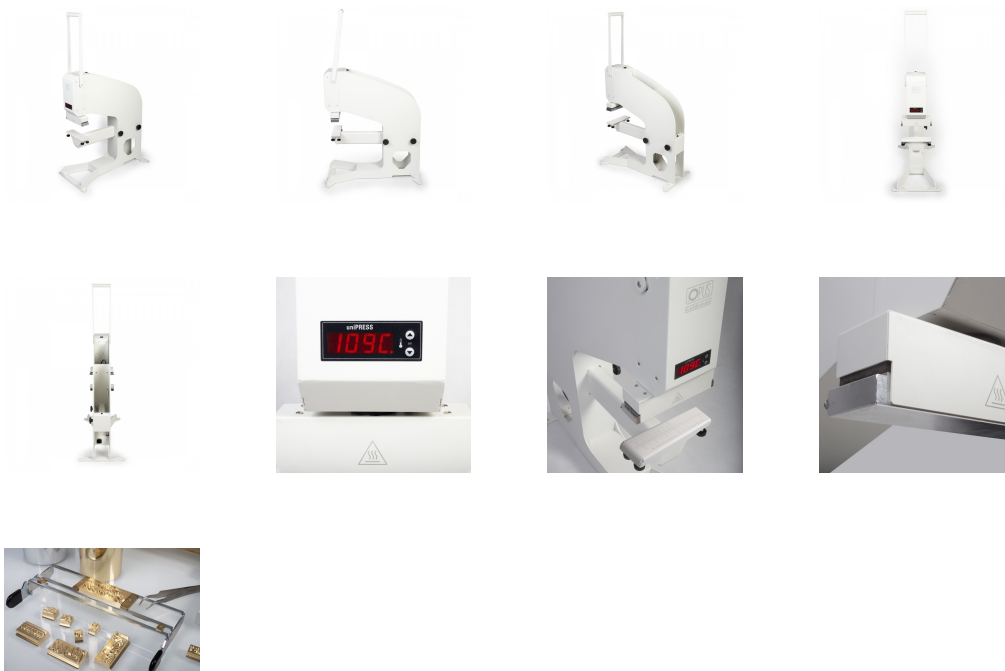
## PERFECT SUPPLEMENT TO GOLDPRESS SERIES MACHINES

**Unipress** has been designed for materials on which, due to their specific shapes, it has not been possible to hot print staping with **GOLDCOVER** so far. It is a perfect complement to the OPUS offer in hot print stamping machines. It will be perfect for **manufacturers of patches, company and advertising gadgets, leather goods, craft workshops or renovation points.**  
Parameters



Gildin type	matrix
Brand	OPUS
Maximum matrix size	50 x 180 mm
Temperature regulation range	20–150 °C
Maximum pressure	50 kN
Force pressing adjustment	no
LCD display	yes
Stamps couter	no
Automatic film rewinding	no
Power supply	220 - 240 V, 50 / 60 Hz
Rated power	100 W
Net weight	36 kg
Gross weight	65 kg
Height	724 mm
Width	300 mm
Depth	607 mm
Device warranty	2 years

### Gallery



Find a product on:

<https://en.opus.pl/electric-hot-print-stamping-machine-opus-unipress>