



**OPUS Sp. z o. o.**  
ul. Toruńska 8, 44-122 Gliwice

+48 32 420 11 11  
kontakt@opus.pl  
opus.pl

Professional electric hot print stamping machine

## **Electric hot print stamping machine - OPUS Masterpress EMD Deep**

Catalogue number: 415397

The electric Masterpress EMD is a hot print stamping machine with an A4 heating block area.



### Description



## **OPUS Masterpress EMD DEEP**

Masterpress EMD DEEP is a professional electric machine designed for hot print stamping, embossing and punching, it has an increased heater overhang and an additional shelf. The machine does hot print stamping with matrices, fonts and special foils. It is perfect for service points, printing houses, producers of books, photo-books, albums,

cardboard and leather products and public administration.

## Modern Hot Print Stamping Machine - Design

The advanced design of the press is based on an eccentric mechanism that allows pressures of up to 5 tonnes. Masterpress EMD DEEP is additionally strengthened by a special shelf. The device is stable, safe and guarantees repeatability of work. The powder coating ensures resistance to corrosion, high temperatures and mechanical damage.

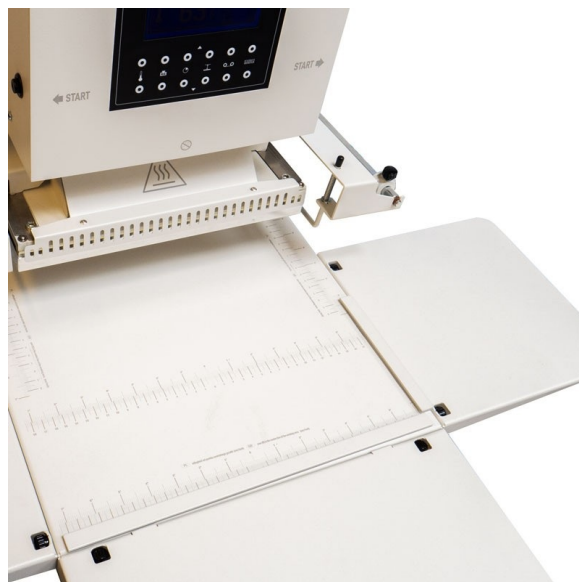


## Programming enhancements

A microprocessor-based PID programmer is responsible for all operating parameters. The user can set the temperature, the stamping force, the distance between the matrix and the material, the stamping time, the daily counter (counting mode or countdown) and the amount of rewound film. The operating status of the machine is continuously displayed for the operator.

## Convenience of use

The machine includes an extendable working table with millimeter scale, metal stops for accurate and repeatable setting of the material. The work table can be accurately adjusted by means of as many as 12 screws. Additional side tables and front table are useful when working with larger materials.

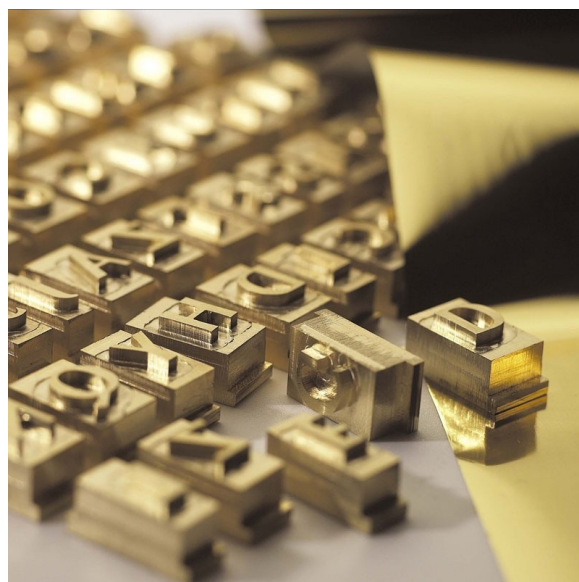


## Hot print stamping of various materials

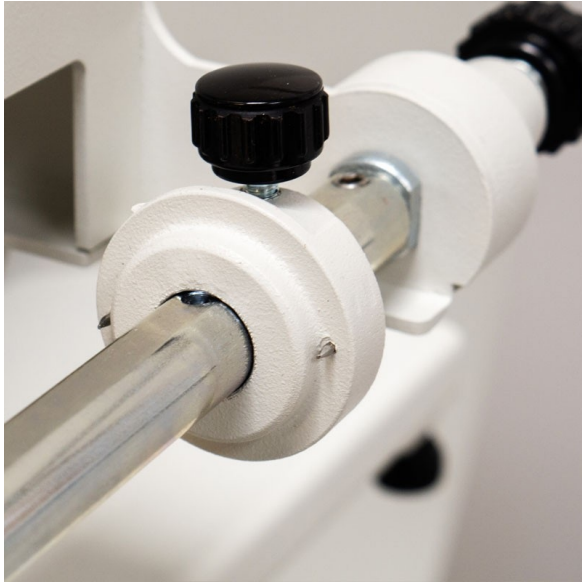
You can hot print stamp on covers, channels, folders, invitations, business cards, etc. The machine is designed to work with paper and cardboard covers and covers covered with paper veneers. It is also possible to work on non-standard materials, e.g. materials covered with leather or leather-like materials, but this requires individual tests and selection of settings.

## Matrices / Fonts / Frames / Hot print stamping foils

The maximum matrix format that can be used is 218 × 308 mm. The OPUS range includes individual matrices in various sizes made specifically for the customer, fonts available in different formats, typefaces and languages, frames that allow any text layout, and multicoloured foils in sheets and rolls. It is also possible to combine an individual matrix with



a text created from ready fonts. Foils for gilding and glossing are available in various colours.



## Automatic advance of hot print stamping film

The use of foil on a roll significantly speeds up work, especially when we have a series of covers to be gilded. The well-thought-out design allows for central positioning of the most popular foils 180, 210 and 230 mm in relation to the matrix. Additionally, the applied counter measures exactly the amount of foil that has been programmed, and a special tension mechanism ensures that it is properly stretched. This allows for economical working especially when using smaller matrices.

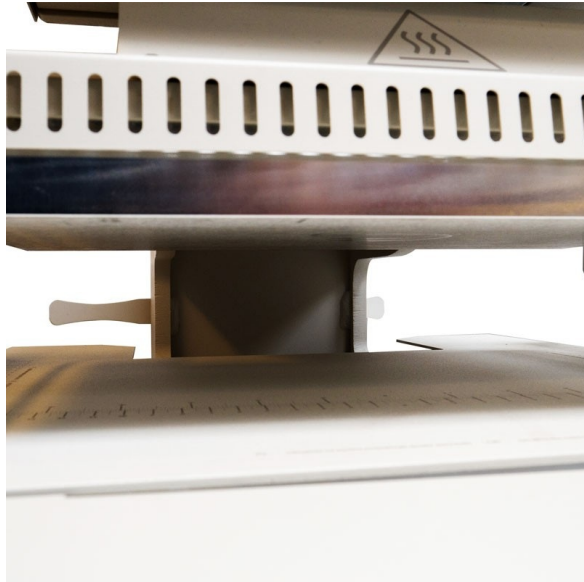
## User safety

For reasons of operator safety, the machine requires ambidextrous operation. Releasing one of the two buttons during the downward movement of the matrix head causes immediate stopping the pressing / punching process. Additionally, Masterpress EMD DEEP is equipped with an emergency stop and the possibility to lock the device with a key. Safety is also confirmed by the CE certificate.



## Transport / Assembly

The device is supplied on a wooden pallet, which ensures easy transport, e.g. by means of a forklift or pallet truck. The set includes comfortable handles, which significantly improve the comfort and safety of assembly of the device.



## Heater overhang

In comparison with Masterpress EMD, the DEEP version has an increased heater overhang (distance from the body to the heater axis/centre) from 152 to 302 mm. This allows you to work on larger materials, increasing the versatility of the machine.

## Key features

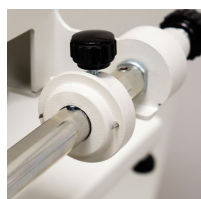
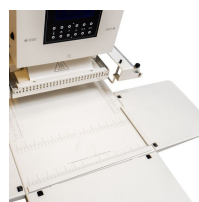
- adjustable pressure up to 5 tonnes
- stable construction
- increased heater overhang
- wide range of accessories
- digital setting of all operating parameters
- safety of use
- additional worktop adjustment
- repeatability of gilding / stamping / punching
- pull-out working table with side tables
- single-phase power supply

## Parameters

Gildin type	matrix
Brand	OPUS
Maximum matrix size	218 x 308 mm
Temperature regulation range	30 - 190°C
Maximum pressure	5000 N
Force pressing adjustment	yes
LCD display	yes

LED display	yes
Stamps couter	yes
Automatic film rewinding	yes
Power supply	220 - 240 V, 50 / 60 Hz
Maximum power consumption	2000 W
Rated power	1500 W
Net weight	153 kg
Gross weight	240 kg
Stand net weight	43 kg
Height	887 mm
Width	510 mm
Depth	795 mm
Device warranty	2 years

## Gallery



Find a product on:

<https://en.opus.pl/electric-hot-print-stamping-machine-opus-masterpress-emd-deep>